

**SUSTAINABLE
FASHION**

ekoten



TENCEL™ Lyocell

TENCEL™ Lyocell fibers are extracted from sustainably grown wood using a unique closed loop system which recovers and reuses the solvents used, minimizing the environmental impact of production. Unique physical properties lead to their high tenacity profile, efficient moisture management and gentleness to skin.

TENCEL™ Modal

Exhibiting high flexibility, TENCEL™ Modal fibers offer textiles a long-lasting quality of exquisite softness. Owing to the fiber's sleek cross-section, TENCEL™ Modal fibers enhance the soft touch of fabrics even after repeated washing. Measurements show that TENCEL™ Modal fibers feel twice as soft as cotton.





E92813-001
Punto Di Roma
94%TEN6%EA
Weight: 280 gr
Width: 176 cm



E91024-003
Punto Di Roma
77%TEN17%PA6%EA
Weight: 290 gr
Width: 165 cm





E94527-002

Punto Di Roma
73%TEN23%PA4%EA
Weight: 210 gr
Width: 154 cm



E96168-003

Punto Di Roma
72%TEN28%PES
Weight: 190 gr
Width: 158 cm



E97207-002

Punto Di Roma
58%MMOD31%PA11%EA
Weight: 230 gr
Width: 135 cm

Organic cotton is grown using methods and materials that have a low impact on the environment. Organic production systems replenish and maintain soil fertility, reduce the use of toxic and persistent pesticides and fertilizers, and build biologically diverse agriculture. Third-party certification organizations verify that organic producers use only methods and materials allowed in organic production. Organic cotton is grown without the use of toxic and persistent pesticides and synthetic fertilizers. In addition, federal regulations prohibit the use of genetically engineered seed for organic farming.





E96557-002

Reported Doubleface Interlock

81%ORGCO15%RCYPES4%EA

Weight: 300 gr

Width: 172 cm



E95885-001

Doubleface Interlock

94%ORGCO6%PA

Weight: 260 gr

Width: 166 cm



E94482-001

Doubleface Interlock

83%ORGCO12%PES5%EA

Weight: 330 gr

Width: 186 cm



E94491-002

Quilted Doubleface Interlock

85%CO15%PA

Weight: 240 gr

Width: 166 cm



E96480-002

Doubleface Interlock

88%ORGCO10%PA2%EA

Weight: 290 gr

Width: 165 cm



E96356-002

Doubleface Interlock

50%ORGCO44%PES6%EA

Weight: 260 gr

Width: 164 cm

A close-up photograph of a rich orange fabric, likely a jacquard, with a subtle woven pattern. A small branch with several green, oval-shaped leaves is placed diagonally across the fabric, adding a natural touch to the composition.

GOTS

Global Organic Textile Standard

GRS

Global Recycled Standard

OCS

Organic Content Standard

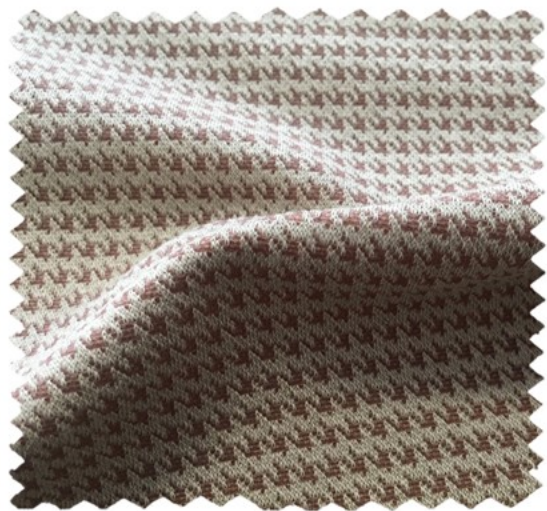
RCS

Recycled Claim Standard

RWS

Responsible Wool Standard

**NATURAL TOUCH
WITH ORGANIC
COTTON
JACQUARD FOR A
FANCY LOOK**



JE92363-002

Jacquard Interlock

61%ORGC031%PA8%EA

Weight: 190 gr

Width: 150 cm





JE90672-001

Jacquard Interlock
59%ORGO37%PES4%EA
Weight: 275 gr
Width: 142 cm



JE90648-001

Jacquard Interlock
54%RCYPES46%ORGO
Weight: 280 gr
Width: 170 cm



JE96039-001

Jacquard Interlock
43%ORGO41%PES16%VIS
Weight: 320 gr
Width: 170 cm



TE96219-001

Jacquard Interlock
75%ORGO22%PA3%EA
Weight: 400 gr
Width: 160 cm



JE90647-001

Structured Jacquard Interlock
64%ORGO27%PES9%EA
Weight: 330 gr
Width: 132 cm

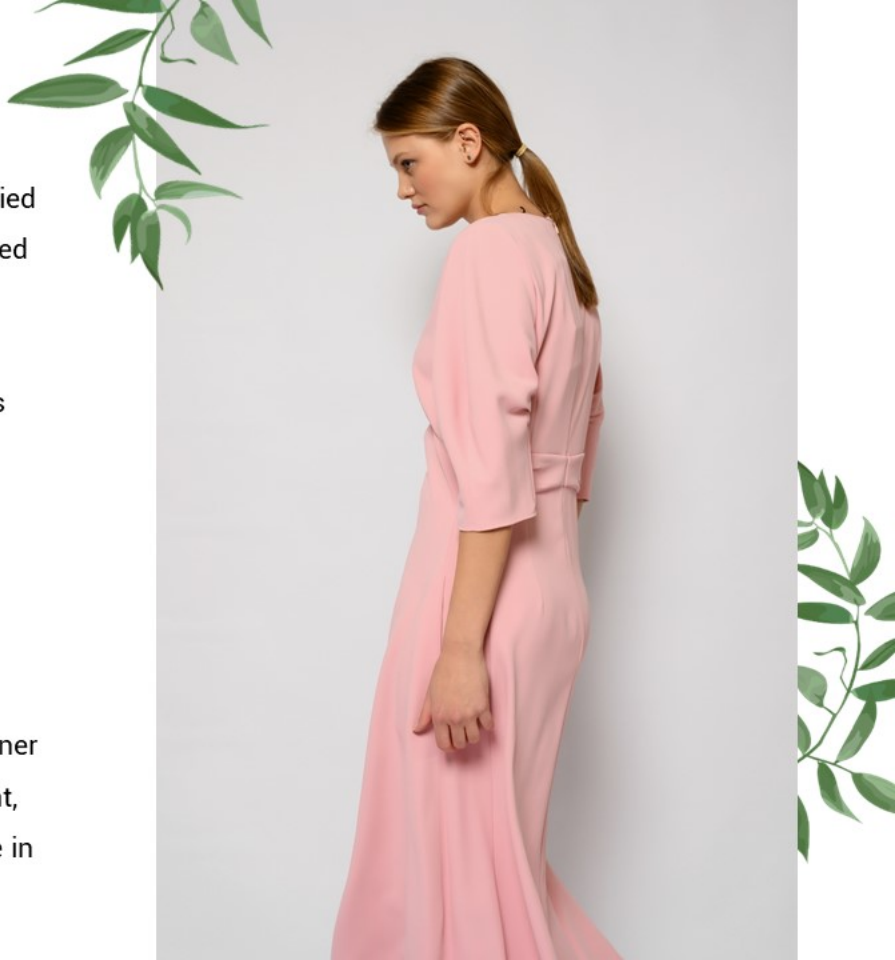


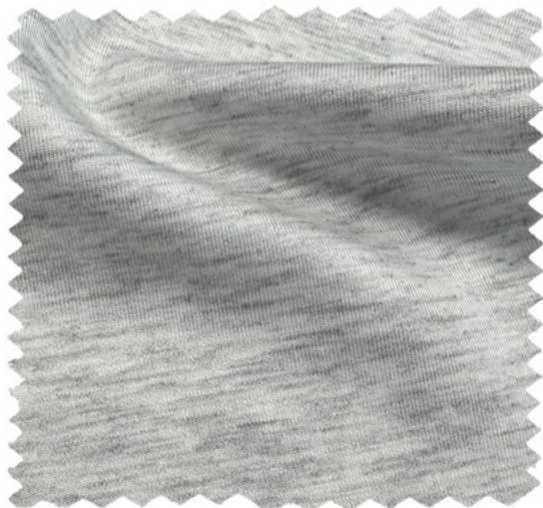
JE96360-002

Jacquard Interlock
58%ORGO27%PES12%RCYPES3%EA
Weight: 225 gr
Width: 138 cm

Livaeco by Birla Cellulose™, Sourced from FSC® certified sustainable forests, the journey of every Livaeco tagged garment can be traced to its origin. Livaeco is Pro-Planet & helps save water, increases forest cover & reduces CO2 emission, so your choice not only makes you fashionable but also helps preserve the environment.

As compared with generic viscose, the production of LENZING™ ECOVERO™ has a substantially smaller environmental footprint. We strive to help build a cleaner and greener world by taking less from the environment, maximizing resource efficiency and minimizing waste in the production process.





E94275-003

Doubleface Spacer
78%VIS14%PES8%EA
Weight: 320 gr
Width: 170 cm



E94250-001

Reported Pique Interlock
54%VIS46%PA
Weight: 170 gr
Width: 178 cm



E94274-002

Doubleface Spacer
78%VIS14%PES8%EA
Weight: 370 gr
Width: 174 cm



E95945-001

Doubleface Interlock

81%VIS10%EA9%PES

Weight: 400 gr

Width: 185 cm



E96597-001

Punto Di Roma

71%VIS24%RCYPA5%EA

Weight: 380 gr

Width: 186 cm



E93725-002

Punto Di Roma

72%VIS25%PA3%EA

Weight: 300 gr

Width: 156 cm

*sustainable fashion
with Ekoten fabrics*



E93467-001

Punto Di Roma

72%VIS23%PA5%EA

Weight: 400 gr

Width: 160 cm